

# WEAVERS OF ORLANDO

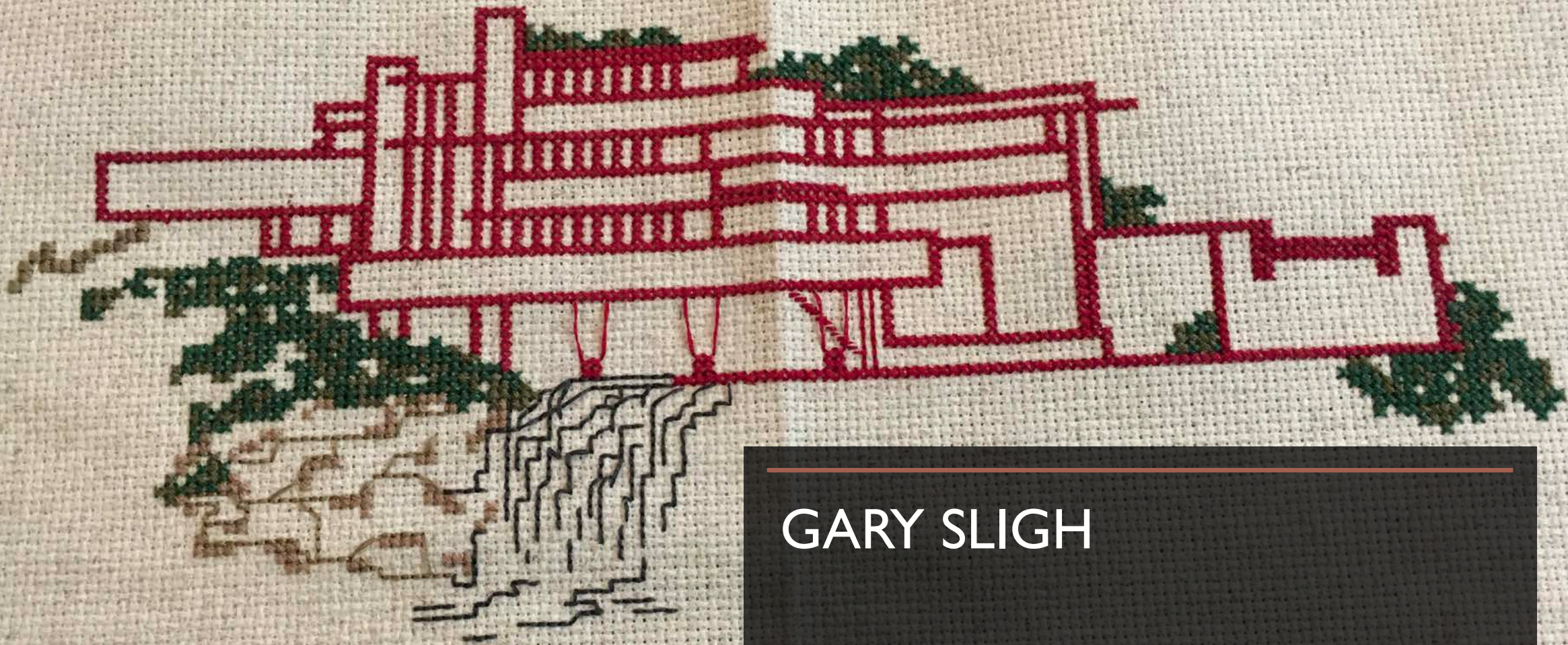
---

NOVEMBER 21, 2020

SHOW AND TELL

# GARY SLIGH

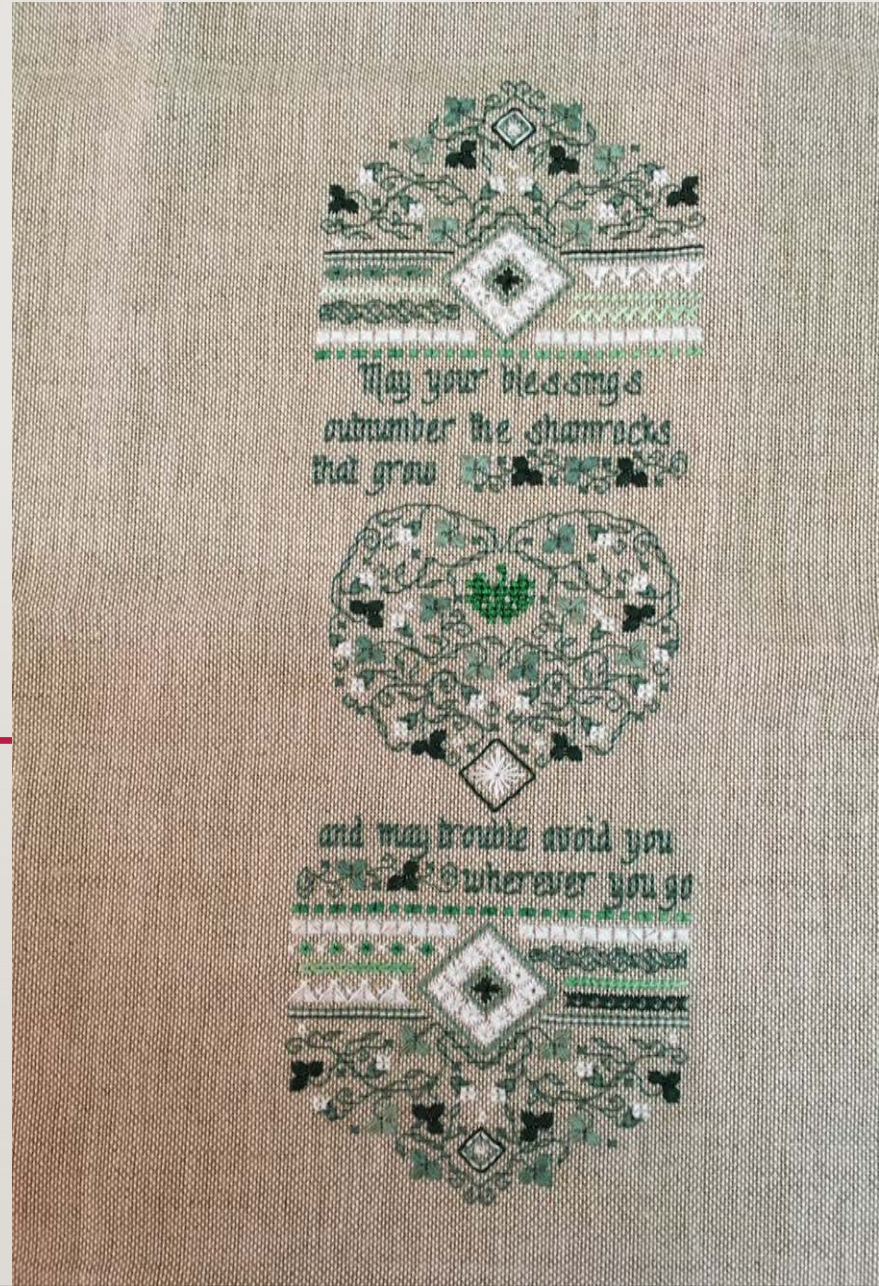
---



GARY SLIGH

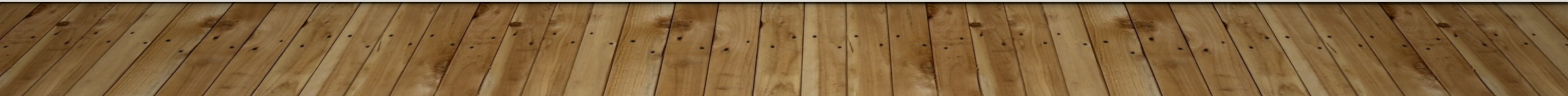
# GARY SLIGH

---



# MERCEDES DINATALE

---





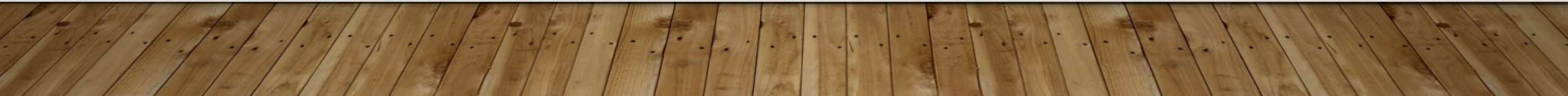
# MERCEDES DINATALE

---

- Weaving in Parallel Universe Workshop
- 4 Shaft Samples
- 10/2 Pearl Cotton
- Diamonds

# ANN REDMOND

---



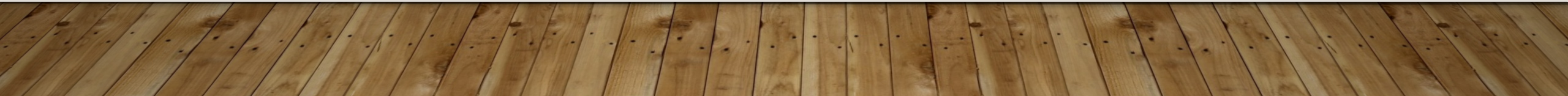


- I **FINALLY** bound the edges of this quilt **15 years after it was quilted!**
- *I didn't do the piecework or quilting*
- *I did the finish work*



# NANCY REACH

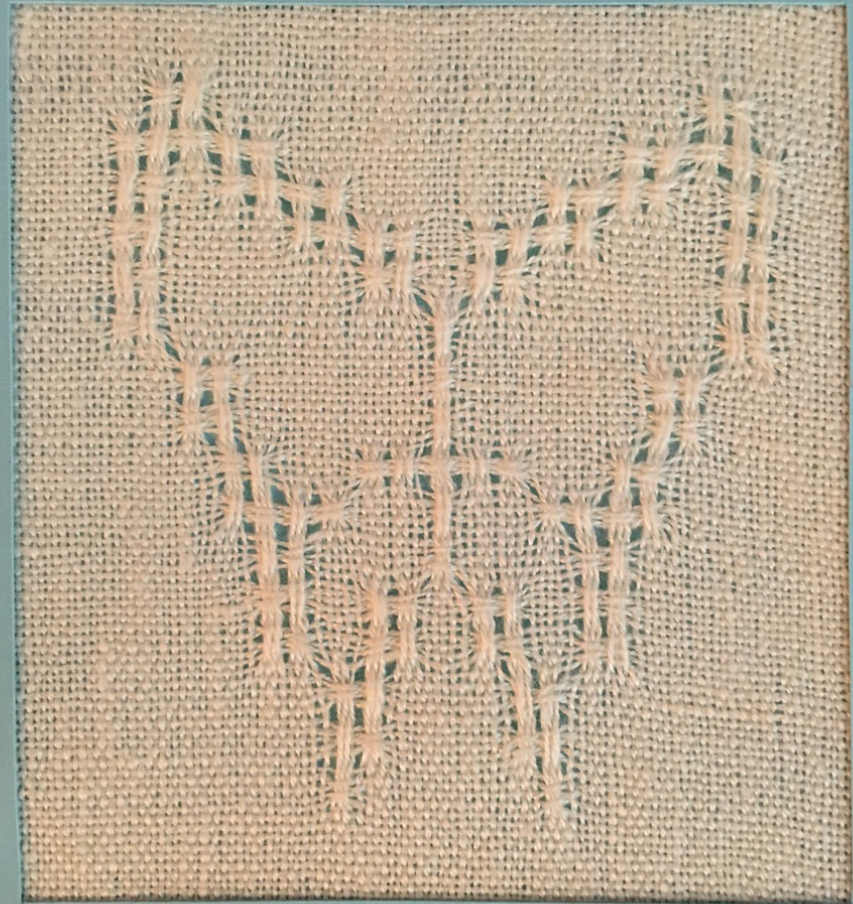
---



# NANCY REACH

---

- Linen
- 12S Huck Lace
- From The Best of Weavers Huck Lace Book



# NANCY REACH

22/2 cottolin

Linda Adamson draft

From Handwoven Jan/Feb 2015



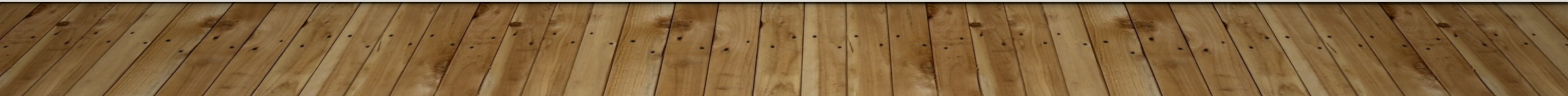
# NANCY REACH

---

- 12/2 natural linen warp
- 14/2 Claudia Handpaints linen weft for two
- 12/2 natural linen weft for the third
- Plain and Canvas weaves

**MARY SCHMUTTE**

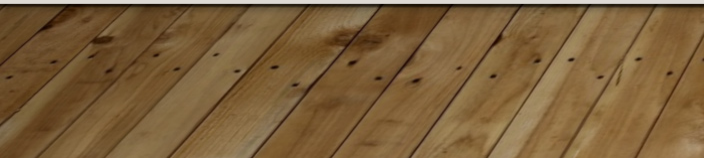
---



# MARY SCHMUTTE



- Same Rayon/Tencel Warp
- Two painted warps
- Deflected Double Weave
- Different Wefts for Each
- Woven on Louet Table Loom



# MARY SCHMUTTE



- Three Blazing Shuttles Warps
- Deflected Double Weave Medallion
- Not yet washed
- Woven on Norwood Loom

